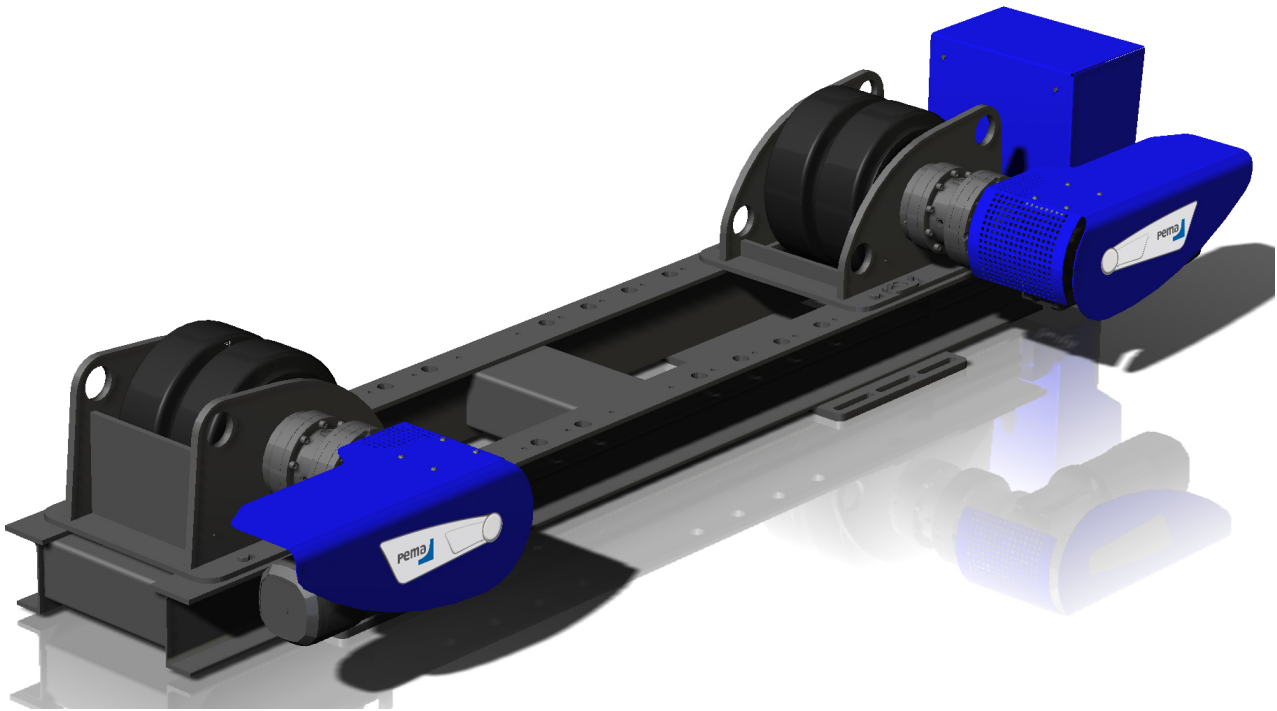


N50 2D DRIVE UNIT

Basic rollerbed with 25 ton capacity



PEMA N series of conventional rollerbeds make up a range of basic solutions for rotating and handling a wide variety of cylindrical work-pieces. They occupy little space and feature a manual diameter adjustment arrangement. Loading capacities range between 12 and 1 600 tons.

PEMA N50 conventional, powered 2-roller-drive rollerbeds are reliable basic tools for rotating and moving cylindrical work-pieces such as tubes, pressure vessels and tanks in automated welding. A power unit is usually combined with one or several idler units. Thanks to their compact size, they occupy little space on shop floor. In the N series, roller distances are manually adjusted to accommodate varying work-piece diameters. N50 models feature reliable and easy stepped manual diameter adjustment by means of a bolt arrangement.

Carefully machined, all PEMA rollerbed frames and parts are dimensioned using high safety factors. Smaller rollerbeds have polyurethane rollers, heavier beds come with high-quality steel rollers.

Smooth and accurate rotation is essential in high-quality welding. In PEMA rollerbeds, this is ensured by high-quality, inverter-controlled AC drives and gears.

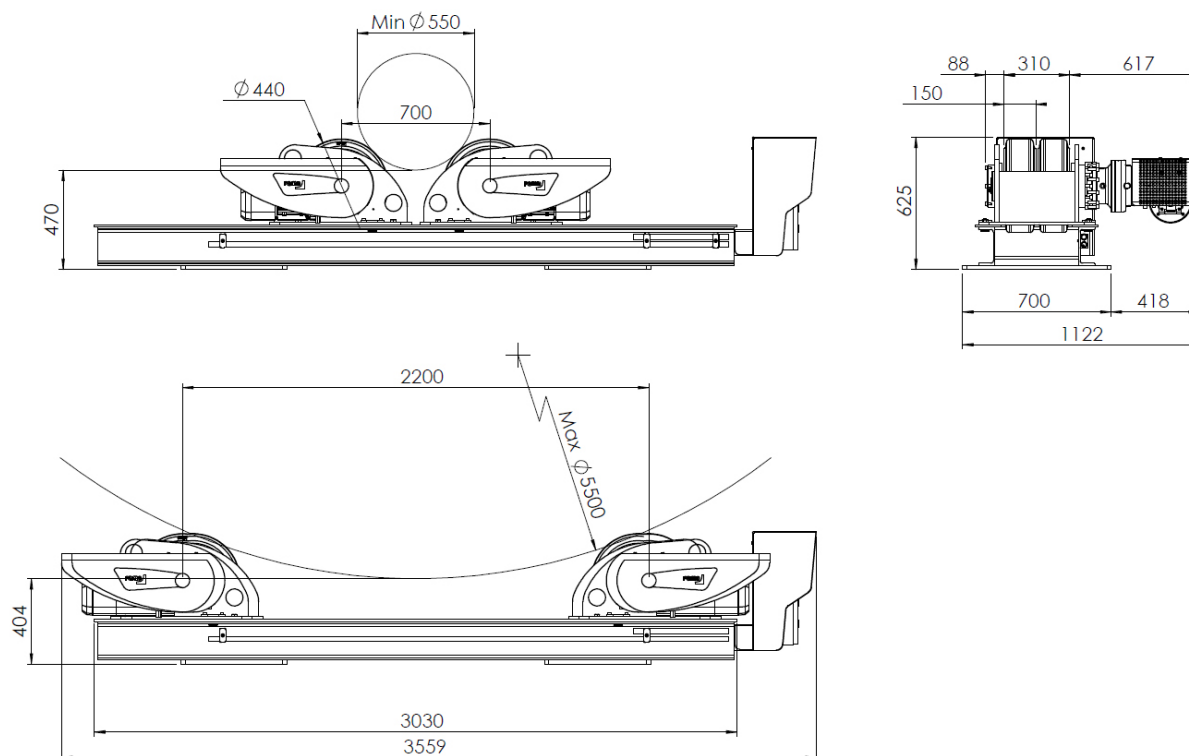
Work-piece movements are easily controlled with a handy 24 V remote controller. The operator can monitor rotation speeds with a digital RPM display.

N series loading capacities range from 12 tons up to even 1 600 tons. Heavier rollerbeds often form a part of PEMA Hard Automation welding solutions.

PEMA rollerbeds are designed in close co-operation with the best welding production professionals. PEMA's extensive experience in designing and manufacturing welding automation solutions has been a key factor in the development of PEMA rollerbeds. Designed to the same high-quality standards as PEMA positioners and column & booms, PEMA rollerbeds fulfil the requirements of the European EN safety norm. All PEMA rollerbeds come with CE markings.

N50 2D DRIVE UNIT

Basic rollerbed with 25 ton capacity



Due to continuous R&D, Pemamek Oy Ltd reserves the right to change the specification without notice.

Technical data

Max load (ton)	25
Rolling capacity (ton)	75
Max. rotation force (kN)	40
Rotation speed range (mm/min)	100-2000
Diameter range min-max 50% (mm)	550-5000
Diameter range min-max 100% (mm)	800-5000
Roller diameter / total width (mm)	440 / 310
Rollers pcs/section	4
Roller material	PU
Width (mm)	1130
Length (mm)	3560
Weight (kg)	1200
Mains supply connection 50 Hz	3*400V+N+PE
Power (A)	16

Optional accessories

- Foot pedal for start/stop of rotation
- Foot pedal for speed control of rotation
- External control of rotation
- Rail car units

PEMAMEK OY LTD

Lamminkatu 47, FI-32201 Loimaa, Finland
Phone: +358 2 760 771 Fax: +358 2 762 8660
e-mail: pema@pemamek.com www.pemamek.com